

## HC-2W Industrial Under Bench Tooling Cabinet Order Code A4225



Due to the weight of the table, it is highly recommended that you have a second person to assist during the build of the table, being made from steel it is heavy and help should be obtained to avoid any injuries.

### Suggestion of what you will need

Note - this assembly guide is merely a recommendation and should not be followed blindly, if you do not have the equipment or the experience necessary to complete this project you should consider seeking advice from a professional.

- 1/2" spanner or 1/2" socket wrench

**NOTE:** You may consider to use other methods and tools to help complete you project, the above list is just a suggestion. read through these instructions before starting the assembly process.

### Getting Started

Before starting the assembly ensure you have the correct tools & equipment to successfully assemble the table whilst making sure you are wearing the appropriate Safety PPE.



### Tooling cabinet suits bench models:

IWB-12, MWB-1275, IWB-40, IWB-2275



IWB-12



MWB-1275



IWB-40



IWB-2275



IWB-12

HC-2W

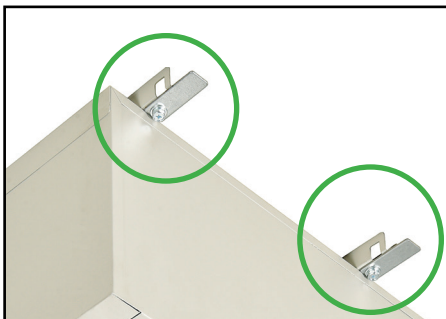
## Step 1

Remove the top drawer of tooling cabinet as shown.



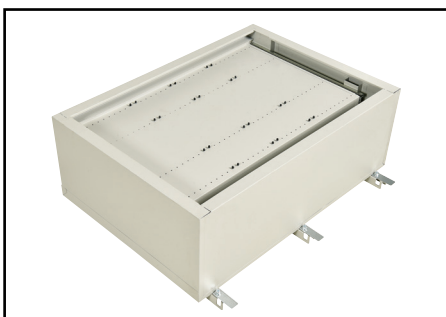
## Step 2

Using a 1/2" spanner or 1/2" socket wrench assemble the 3 x mounting brackets. Then bolt on the 3 x clamps as shown below. Note: Leave clamp bolts loose for now.



## Step 3

Flip tooling cabinet upside down as shown.



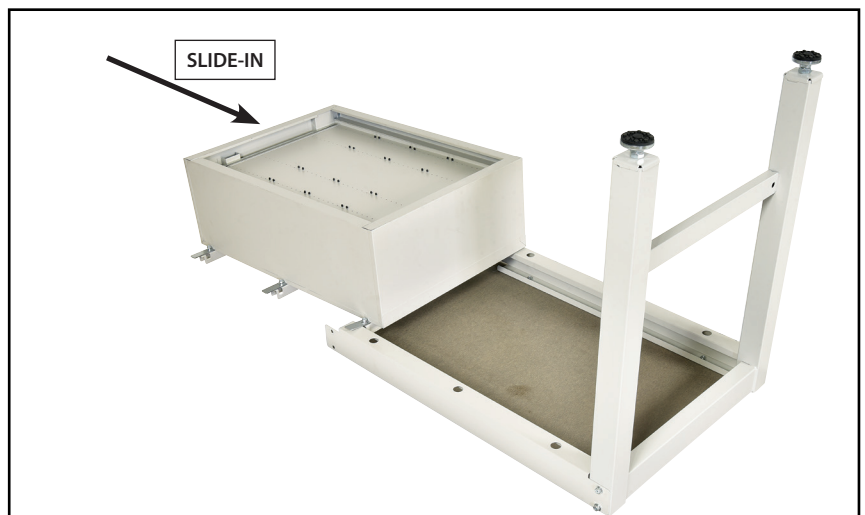
### Step 4

If work bench is already assembled, remove one leg frame and the rear leg cross support as shown.



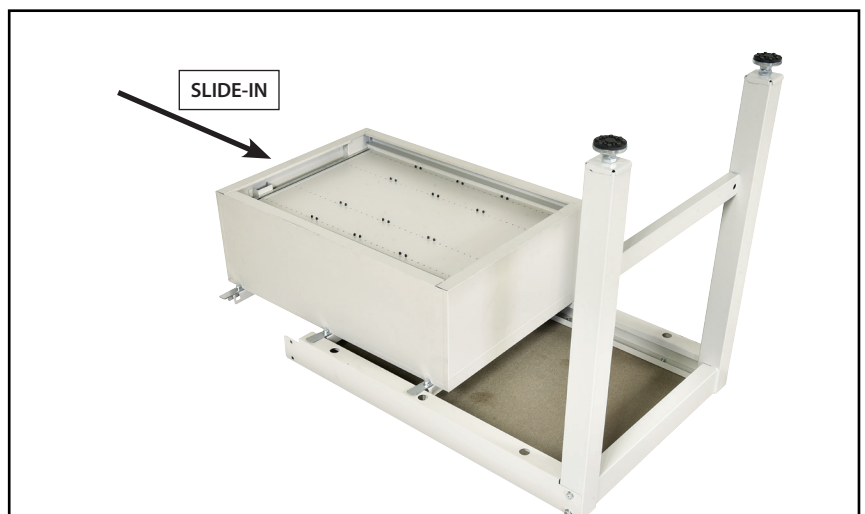
### Step 5

Slide the tooling cabinet onto the work bench while keeping the rear clamps above the table frame as shown below.



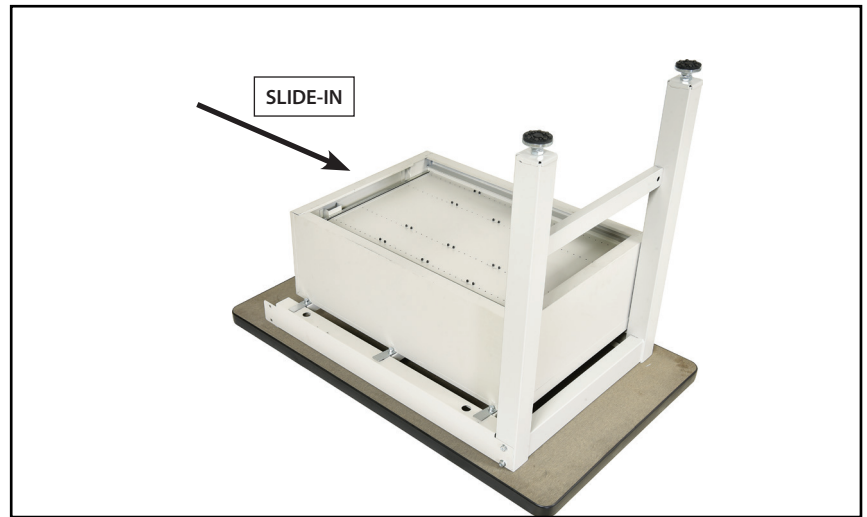
### Step 6

Proceed to slide the tooling cabinet unit onto the work bench as shown.



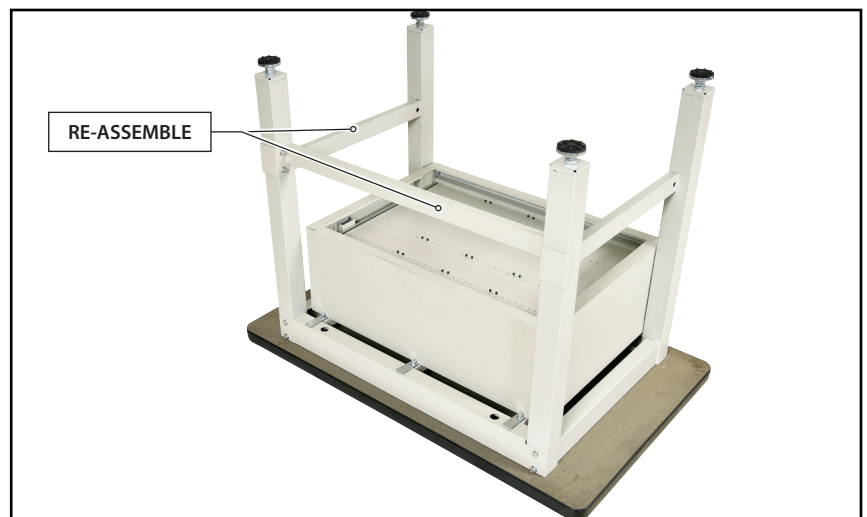
### Step 7

Slide the drawer unit to desired location or in the case of this model as shown all the way to the end until touches the legs.



### Step 8

Re-assemble the work bench rear leg cross support as shown.



### Step 9

Using a 1/2" spanner, tighten all rear clamps as shown.



### Step 10

Flip table to the upright position as shown.



---

### Step 11

Install the top drawer of the tooling cabinet as shown.

The work bench with under bench tooling cabinet is now ready for use.

